

---

# SPDR<sup>®</sup> ETFs

# Election Chart Pack

## Key Charts to Navigate the 2020 Election

For Investment Professional Use Only

# S&P 500 Performance Under Different Control Scenarios

## Average Annual Performance

<i>Political Scenarios</i>	<b>1933 – 2019</b>	
	<i>% Change</i>	<i>Number of Years</i>
Unified Government	10.03%	42
Democratic President	9.34%	34
Republican President	12.95%	8
Unified Congress	7.42%	32
Democratic President	12.96%	10
Republican President	4.91%	22
Split Congress	10.38%	12
Democratic President	13.60%	4
Republican President	8.77%	8
<i>All Years</i>	<i>9.11%</i>	<i>86</i>

## S&P 500 Post-Election Avg. Performance (1948 – 2017, Cumulative %)

	Post-Election Returns (Nov - Dec)	Post-Election First-Year Return (Jan - Dec)	Post-Election Two-Year Return	Post-Election Three-Year Return	No. of Times
Democratic President	1.91	19.75	32.36	56.25	8
Democratic Congress	1.39	15.38	22.83	48.32	6
Republican Congress	5.42	33.34	71.43	107.49	1
Split Congress	1.49	32.37	50.48	52.55	1
Republican President	3.60	3.86	14.19	37.75	10
Democratic Congress	2.80	-0.53	3.17	25.87	4
Republican Congress	7.80	8.6	29.59	59.86	3
Split Congress	0.46	4.97	13.50	31.49	3

**A split Congress has been the most beneficial to the S&P 500's performance when a Democrat has been in the White House**

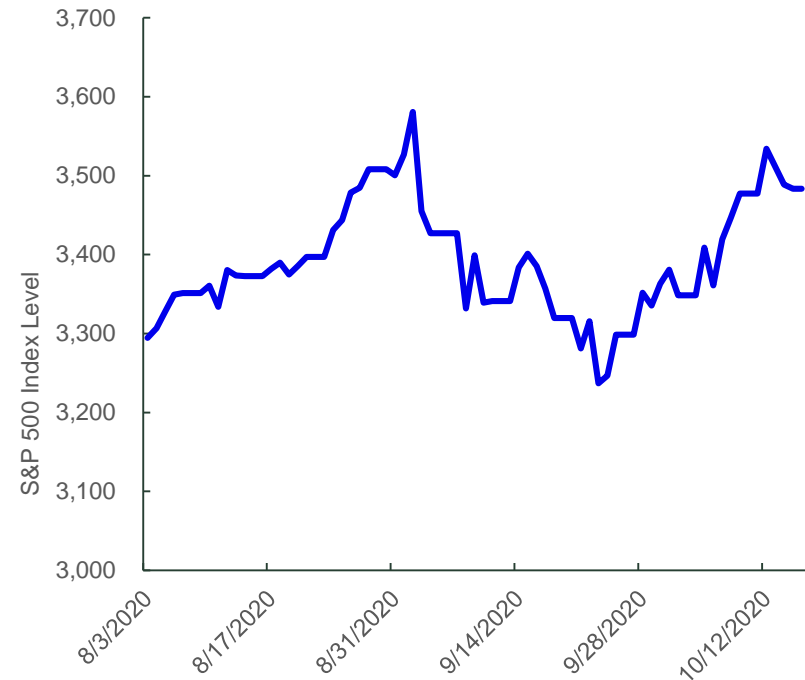
Source: Strategas, as of August 31, 2020. **Past performance is not a guarantee of future results.** Data excludes 2001 due to Sen. Jeffords changing parties midyear

# S&P 500 Performance History, Recessions and Election Outcomes

**S&P 500 Performance 3 Months Prior to the Election, by Outcome (1928 – 2016)**

Election Year	3 Months Prior to Presidential Election	Incumbent Win/Loss	Economic Recession
2016	-1.90%	Loss	
2012	2.45%	Win	
2008	-19.48%	Loss	<i>Recession</i>
2004	2.16%	Win	
2000	-3.21%	Loss	
1996	8.17%	Win	
1992	-1.22%	Loss	
1988	1.91%	Win	
1984	4.80%	Win	
1980	6.73%	Loss	<i>Recession</i>
1976	-0.09%	Loss	
1972	6.91%	Win	
1968	6.45%	Loss	
1964	2.63%	Win	
1960	-0.74%	Loss	<i>Recession</i>
1956	-2.58%	Win	
1952	-3.26%	Loss	
1948	5.36%	Win	<i>Recession</i>
1944	2.29%	Win	
1940	8.56%	Win	
1936	7.92%	Win	
1932	-2.56%	Loss	<i>Recession</i>
1928	14.91%	Win	

**S&P 500 Performance Since 8/03/2020**



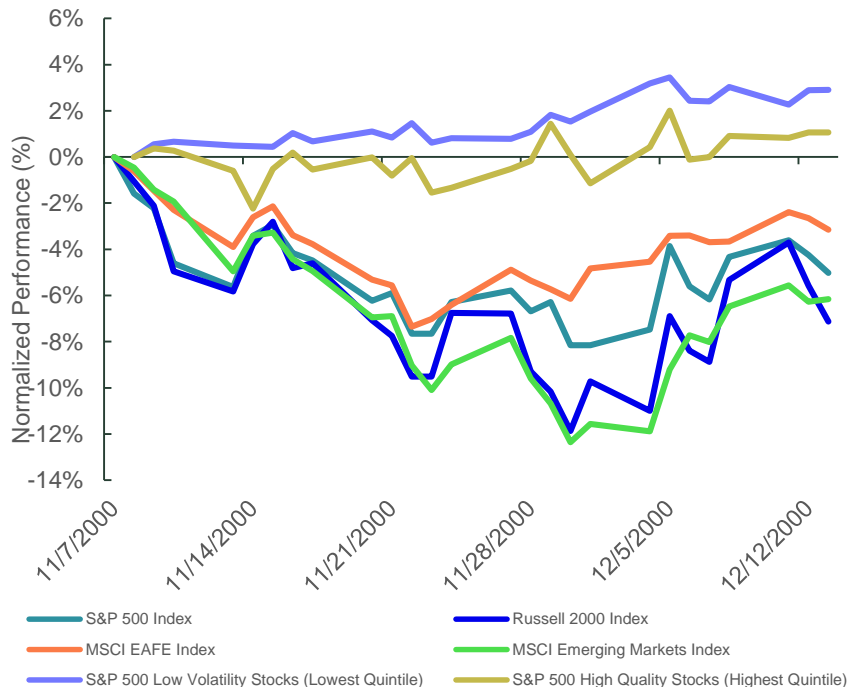
**Historically, when the S&P 500 gained three months prior to the election, the incumbent party won, with few exceptions. Only once has an incumbent won during a recession**

Source: Strategas, as of August 31, 2020. S&P Index performance for 2020 as of 10/16/2020. **Past performance is not a guarantee of future results.** Data excludes 2001 due to Sen. Jeffords changing parties midyear. 08/03/2020 was picked because it will be exactly three months before the election date on 11/03/2020.

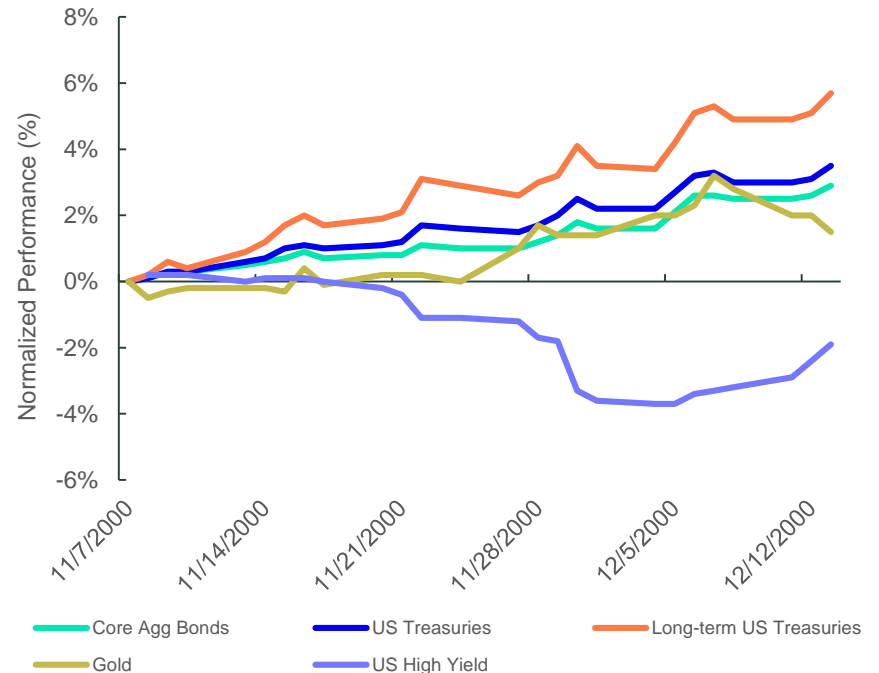
# Contested Elections

The contested election in 2000 may provide insight if the same happens in 2020, as back then, it created considerable uncertainty and led to equities selling off

**Equity Market Performance During the 2000 Recount**  
(11/07/2000 – 12/13/2000)



**Bond and Gold Performance During 2000 Recount**  
(11/07/2000 – 12/13/2000)

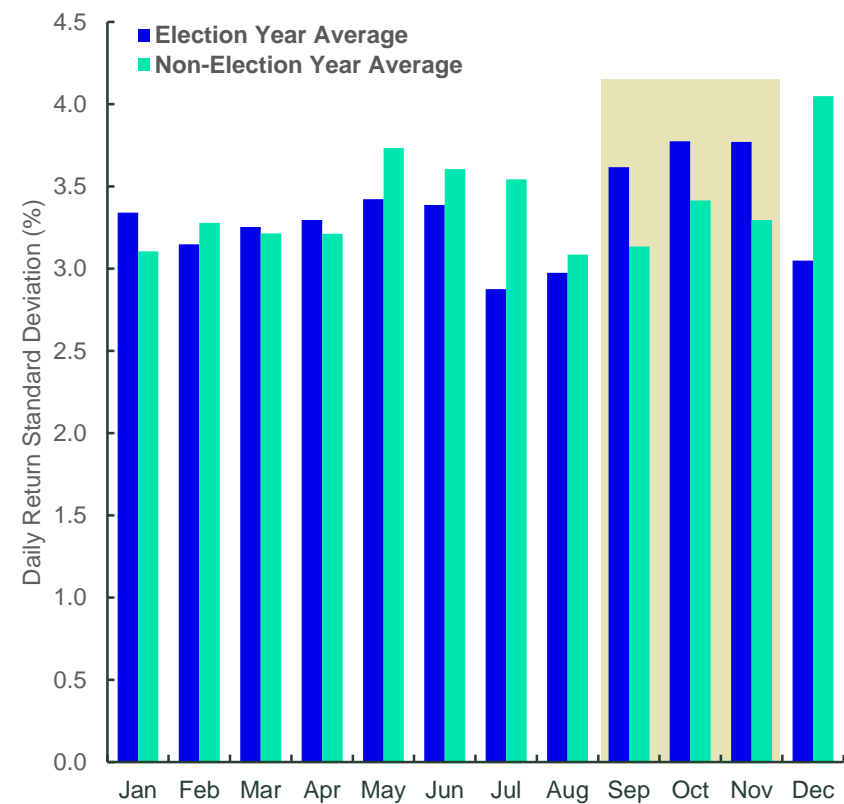


Source: Bloomberg Finance, L.P. **Past performance is not a guarantee of future results.** Index returns are unmanaged and do not reflect the deduction of any fees or expenses. Index returns reflect all items of income, gain and loss and the reinvestment of dividends and other income. S&P 500: S&P 500 Index; Gold: LBMA Gold Price; Russell 2000: Russell 2000 Index; Agg: Bloomberg Barclays US Agg Index; US Treasuries: Bloomberg Barclays US Treasury Index; EAFE: MSCI EAFE Index; Emerging Markets: MSCI Emerging Markets Index; VIX: VIX Index. S&P 500 Low Volatility Index: The Low Vol basket consists of S&P 500 stocks ranked at bottom quintile based on volatility. S&P 500 Quality Index: Basket consisting of S&P 500 stocks ranked at highest quintile based on quality

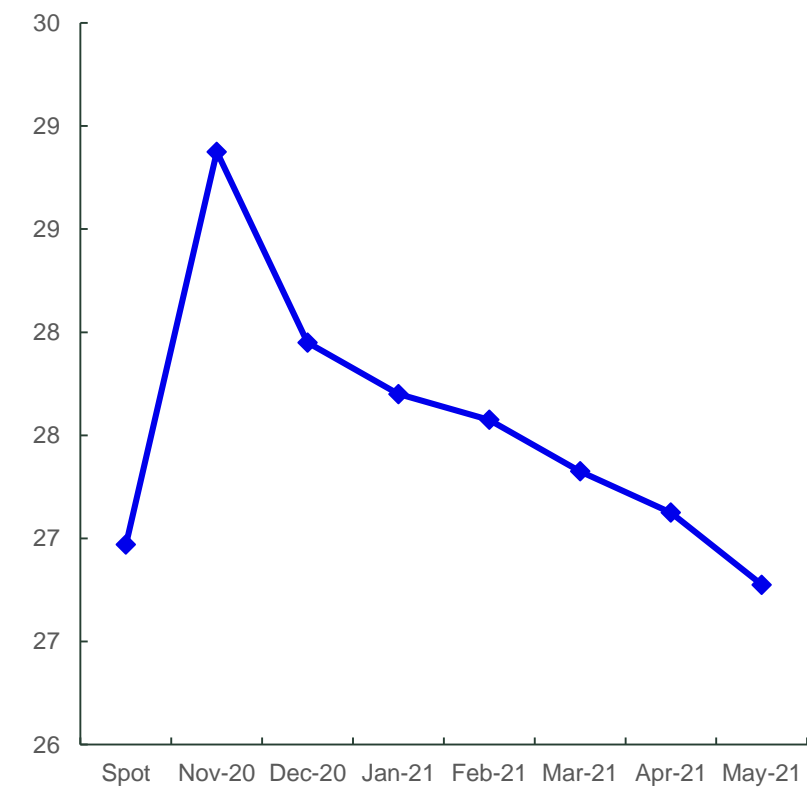
# Election Volatility

Option markets are pricing in an increase in market volatility ahead of the election in November, consistent with historical volatility trends in election years.

Historical Monthly Realized Volatility (1929 – 2019)



VIX Futures Curve

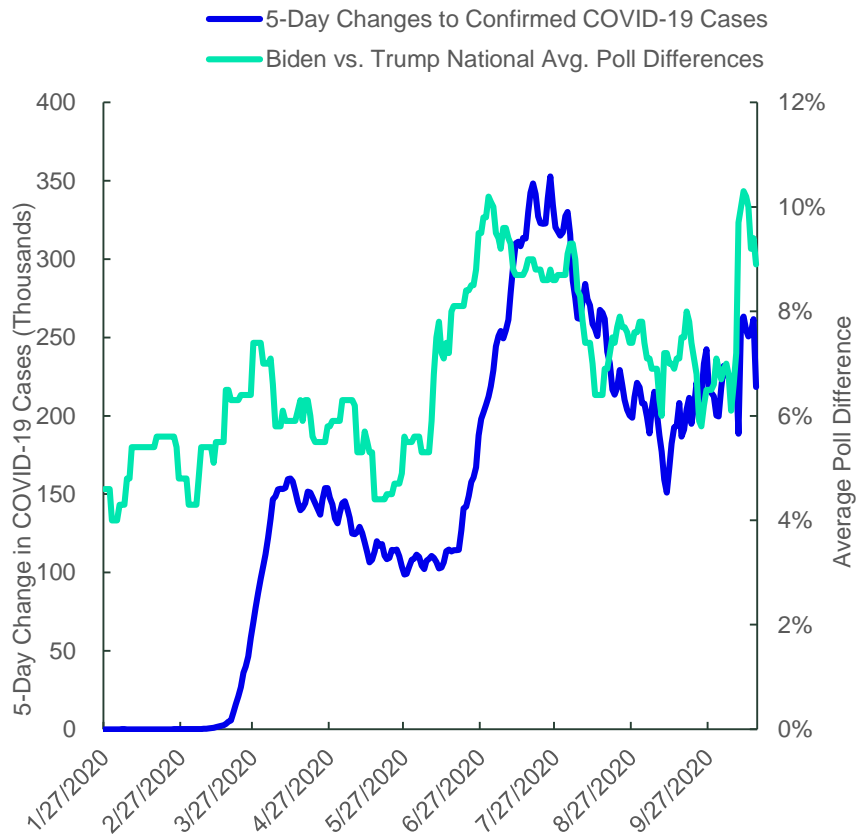


Source: Bloomberg Finance, L.P., as of 10/16/2020.

# Presidential Polls

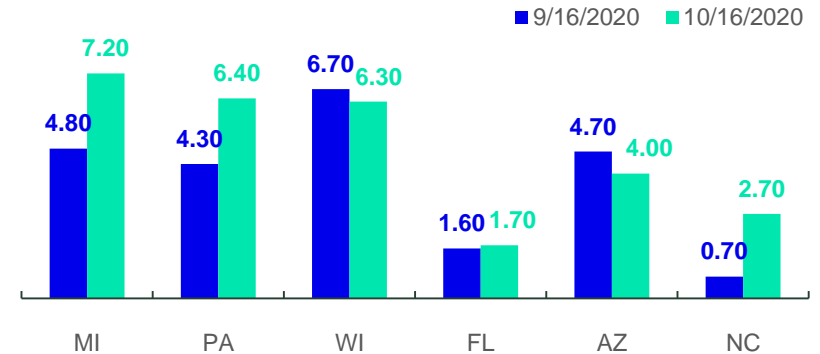
Biden's lead over Trump spiked nationally following the first presidential debate. However, his lead in a few swing states remains narrow.

## COVID-19 Cases Vs. Polling, Year to Date

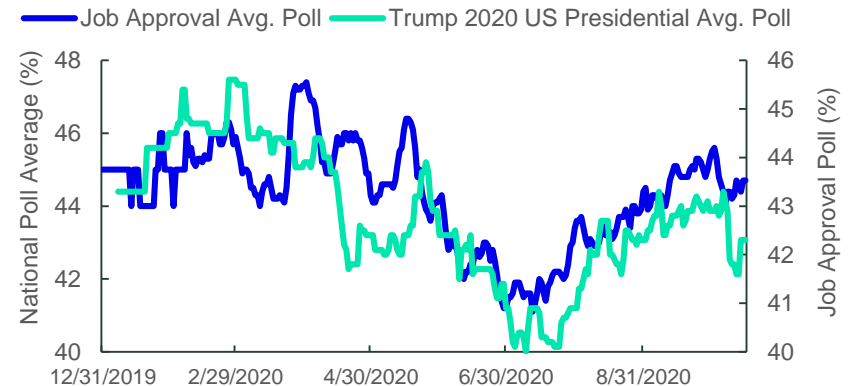


Source: Bloomberg Finance, L.P.; RealClearPolitics, as of 10/16/2020.

## Biden vs. Trump Avg. Poll Differences in Swing States



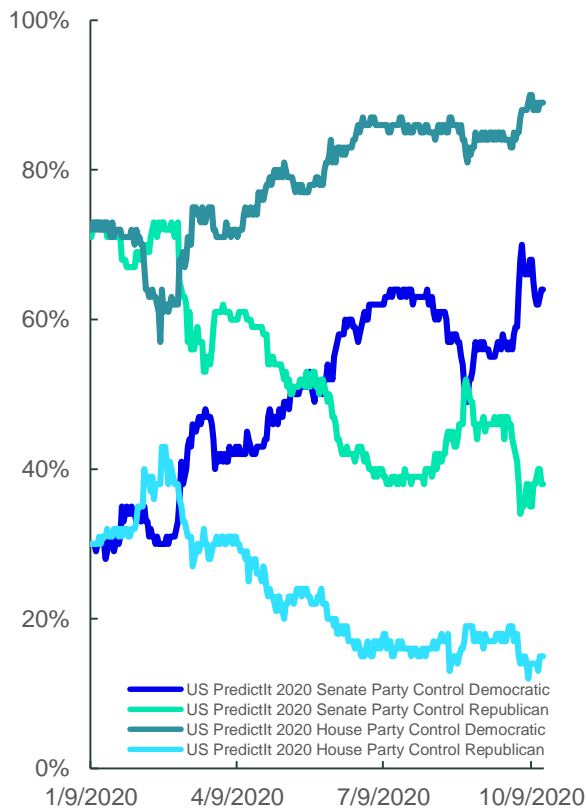
## Trump Presidential National Avg. Poll vs. Job Approval Avg. Poll



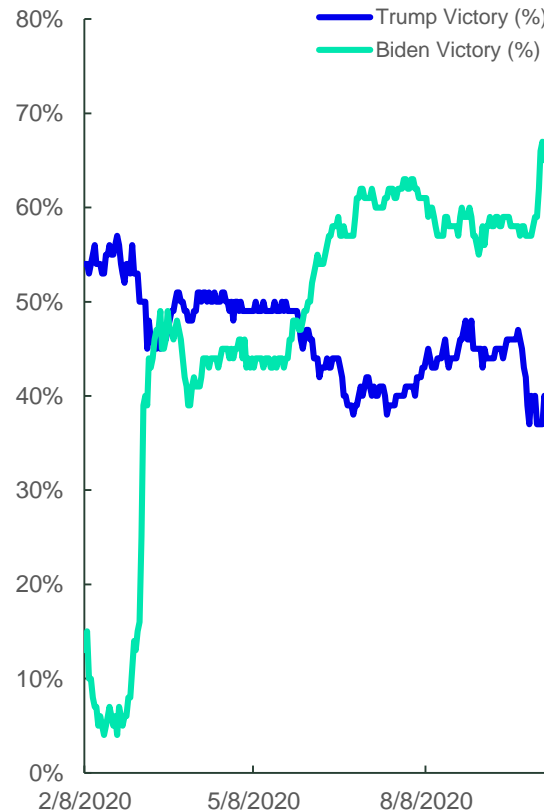
# Congressional Race

Current betting odds showed a higher probability of Democrat-controlled senate and White House lately

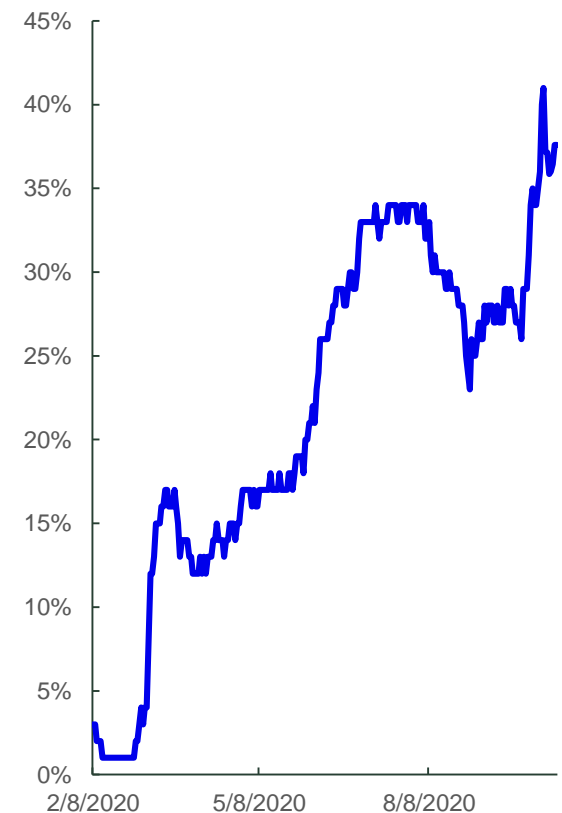
Probability for House Control



Probability for White House Victor



Probability for Democratic Sweep\*



Source: PredictIt Odds as of 10/16/2020.\* The probability of Democratic sweep is calculated by multiplying the probability of Democratic Senate, Democratic House and Biden's win of presidential election.

# 2020 Market-Based Election Issues

Issues	Democratic Sweep	Republican Status Quo
<b>Health Care</b>	<ul style="list-style-type: none"> <li>Biden's pandemic response plan includes greater production of equipment, testing and tracing – as well as pursuing novel treatments.</li> <li>If necessary, he could use executive orders to implement his plans.</li> </ul>	<ul style="list-style-type: none"> <li>Trump's renewed emphasis on further weakening the Affordable Care Act may alleviate relative headline risk for broad health care.</li> <li>The same is true for specific health services and insurance firms</li> </ul>
<b>Clean Energy /Infrastructure</b>	<p>Biden is advocating for modern and sustainable infrastructure through:</p> <ul style="list-style-type: none"> <li>\$2 trillion infrastructure plan seeking to achieve carbon neutrality in the US power sector by 2035</li> <li>Shift toward electric vehicles</li> <li>Reinstate environmental regulations</li> </ul>	<ul style="list-style-type: none"> <li>Expect increases in more traditional infrastructure spending to rebuild airports, highways, railroads, and bridges.</li> <li>Expect little support for clean energy, as Trump likely would continue to pursue looser environmental policies.</li> <li>However, traditional energy firms may still be hurt by global supply/demand trends.</li> </ul>
<b>Technology /Antitrust</b>	<ul style="list-style-type: none"> <li>Antitrust legislation could impact mega cap, tech conglomerates</li> <li>This may lead to growth opportunities for smaller innovative tech-related firms</li> </ul>	<ul style="list-style-type: none"> <li>Antitrust concerns could become just a headline risk for mega-cap tech. firms</li> <li>This could lead to little impact on mega-cap tech conglomerates' ability to generate cash flow.</li> </ul>

Source: State Street Global Advisors, SPDR Americas Research.

# 2020 Market-Based Election Issues

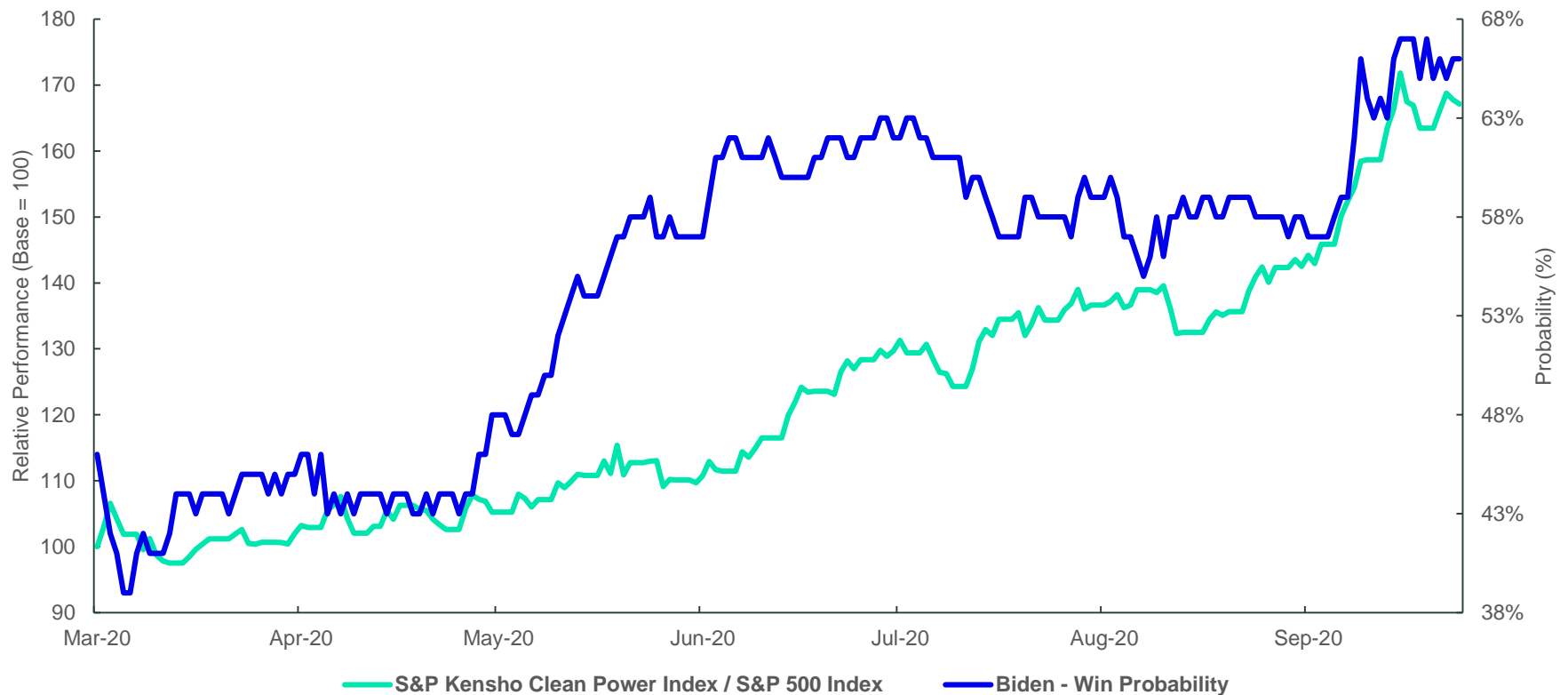
Issues	Democratic Sweep	Republican Status Quo
<b>Trade/ Foreign Policy</b>	<ul style="list-style-type: none"> <li>• A likely reprieve of punitive tit-for-tat tariffs could be growth positive for regions most impacted by the current tariffs.</li> <li>• Given the White House's sweeping trade powers, Biden could exert his influence even without Congressional support.</li> </ul>	<ul style="list-style-type: none"> <li>• More hawkish trade rhetoric and additional tariffs are likely.</li> <li>• This could dampen sentiment for overseas exposures and sectors that rely on global supply chains (i.e., industrials).</li> <li>• But benefit more domestically oriented markets, such as small and midsize firms.</li> </ul>
<b>Taxes</b>	<ul style="list-style-type: none"> <li>• Biden has called for higher corporate and individual tax rates.</li> <li>• Sectors with low effective tax rates may be less impacted.</li> <li>• Higher tax rates may benefit tax-exempt securities.</li> <li>• If Republicans retain control of the Senate, Biden's tax plan may not come to fruition.</li> </ul>	<ul style="list-style-type: none"> <li>• Even before the virus-induced economic downturn, the Trump administration was openly discussing a second tax cut to entice companies to bring jobs onshore.</li> <li>• Corporate tax cuts could boost earnings for sectors with high tax rates.</li> <li>• Lower individual tax rates may fuel more consumer spending.</li> </ul>

Source: State Street Global Advisors, SPDR Americas Research

# Clean Energy and Dem. Control

Biden's advocacy for modern and sustainable infrastructure is pushing up the clean energy industry

Clean Energy vs. Biden Odds

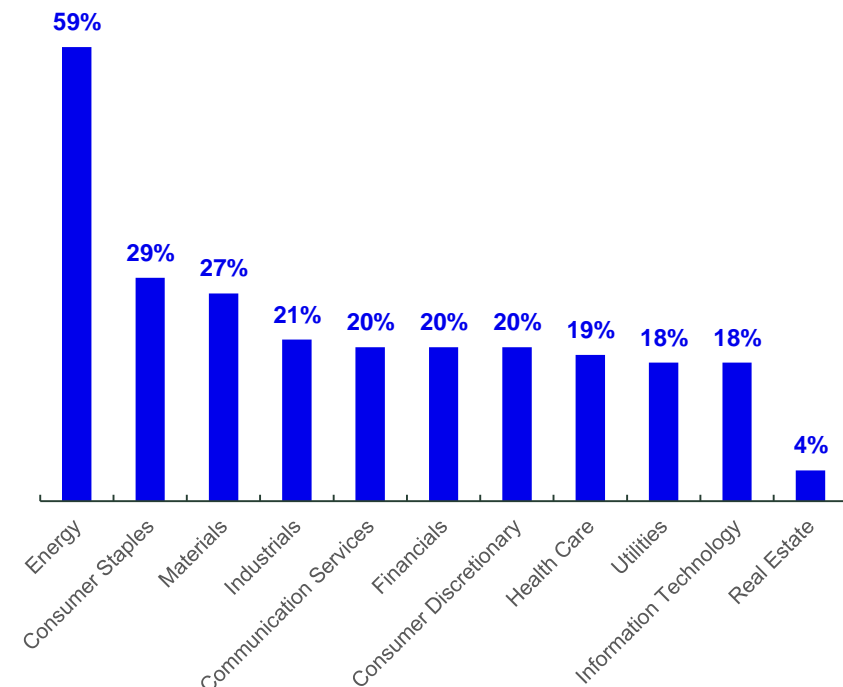


Source: Bloomberg Finance L.P., calculated by State Street Global Advisors, as of 10/16/2020. Biden win probability is calculated with PredictIt data. **Performance quoted represents past performance, which is no guarantee of future results.**

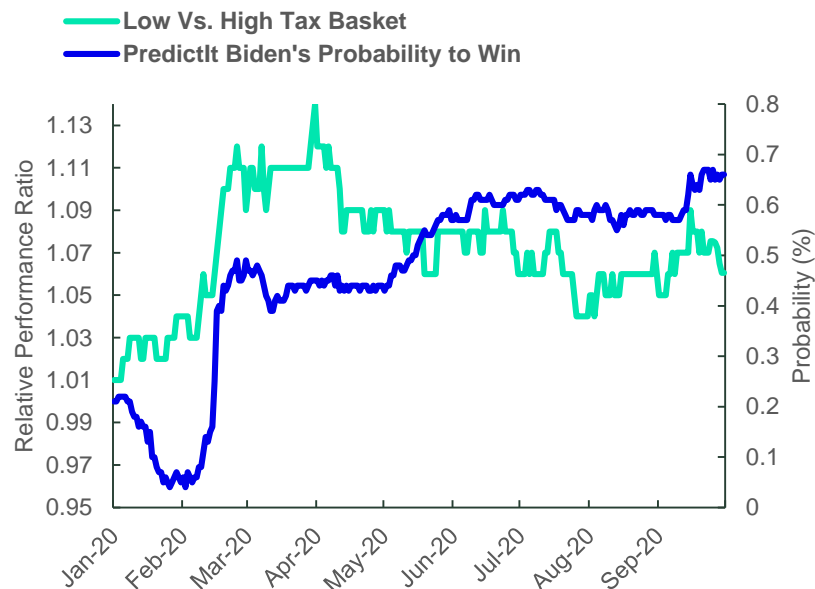
# Tax Policy Impacts

Sectors with low effective tax rates may be less impacted by potential higher corporate tax rates under a Democratic Sweep scenario.

Average of 2019 Tax Rate, by Sector



Relative Performance: High Tax vs. Low Tax



Top 3 Sectors

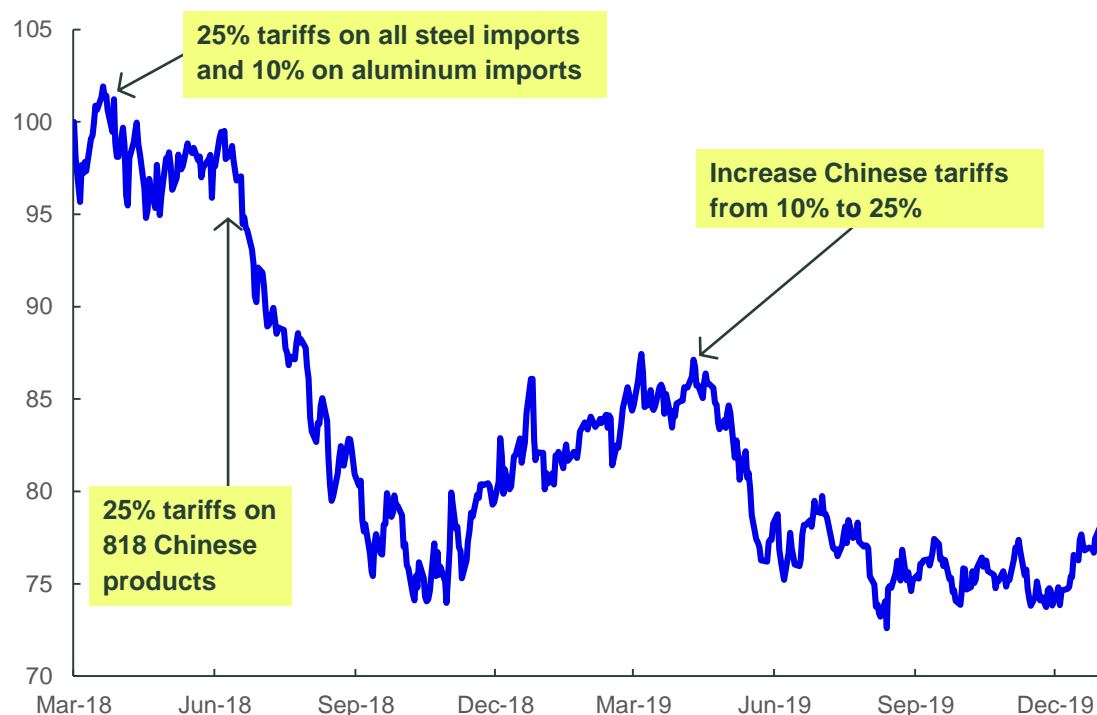
Low Tax Basket	Real Estate	Tech.	Health Care
High Tax Basket	Industrials	Cons. Disc.	Energy

Source: FactSet, Bloomberg Finance L.P., calculated by State Street Global Advisors, as of 10/16/2020. Low and high tax baskets consist of equal-weighted top and bottom quintile securities based on their 2019 tax rate, respectively. **Past performance is not a guarantee of future results.**

# Trade Policy Impacts

Under a Democratic sweep scenario, tariff-led pressures on Chinese equities may be reduced. Conversely, more domestic segments may benefit under the status quo.

S&P China BMI Performance Relative to the S&P 500 During US-China Trade War



Foreign Revenue Exposure per S&P Style Box

	Value	Blend	Growth
Large	30	33	37
Mid	22	24	24
Small	20	21	23

Source: Bloomberg Finance L.P., FactSet, as of 8/31/2020. Performance quoted represents past performance, which is no guarantee of future results.

## Appendix

# Important Disclosures

The views expressed in this material are the views of SPDR Americas Research Team and are subject to change based on market and other conditions. This document contains certain statements that may be deemed forward-looking statements. Please note that any such statements are not guarantees of any future performance and actual results or developments may differ materially from those projected.

The information provided does not constitute investment advice and it should not be relied on as such. It should not be considered a solicitation to buy or an offer to sell a security. It does not take into account any investor's particular investment objectives, strategies, tax status or investment horizon. You should consult your tax and financial advisor.

All material has been obtained from sources believed to be reliable. There is no representation or warranty as to the accuracy of the information and State Street shall have no liability for decisions based on such information.

All the index performance results referred to are provided exclusively for comparison purposes only. It should not be assumed that they represent the performance of any particular investment.

**Bonds** generally present less short-term risk and volatility than stocks, but contain interest rate risk (as interest rates rise, bond prices usually fall); issuer default risk; issuer credit risk; liquidity risk; and inflation risk. These effects are usually pronounced for longer-term securities. Any fixed income security sold or redeemed prior to maturity may be subject to a substantial gain or loss.

The values of **debt securities** may decrease as a result of many factors, including, by way of example, general market fluctuations; increases in interest rates; actual or perceived inability or unwillingness of issuers, guarantors or liquidity providers to make scheduled principal or interest payments; illiquidity in debt securities markets; and prepayments of principal, which often must be reinvested in obligations paying interest at lower rates.

**Equity securities** may fluctuate in value in response to the activities of individual companies and general market and economic conditions.

**Foreign (non-U.S.) Securities** may be subject to greater political, economic, environmental, credit and information risks. Foreign securities may be subject to higher volatility than U.S. securities, due to varying degrees of regulation and limited liquidity. These risks are magnified in **emerging markets**.

Investments in **small-sized companies** may involve greater risks than in those of larger, better known companies.

Companies with **large market capitalizations** go in and out of favor based on market and economic conditions. Larger companies tend to be less volatile than companies with smaller market capitalizations. In exchange for this potentially lower risk, the value

of the security may not rise as much as companies with smaller market capitalizations.

The trademarks and service marks referenced herein are the property of their respective owners. Third party data providers make no warranties or representations of any kind relating to the accuracy, completeness or timeliness of the data and have no liability for damages of any kind relating to the use of such data.

The whole or any part of this work may not be reproduced, copied or transmitted or any of its contents disclosed to third parties without SSGA's express written consent

Standard & Poor's, S&P and SPDR are registered trademarks of Standard & Poor's Financial Services LLC (S&P); Dow Jones is a registered trademark of Dow Jones Trademark Holdings LLC (Dow Jones); and these trademarks have been licensed for use by S&P Dow Jones Indices LLC (SPDJI) and sublicensed for certain purposes by State Street Corporation. State Street Corporation's financial products are not sponsored, endorsed, sold or promoted by SPDJI, Dow Jones, S&P, their respective affiliates and third party licensors and none of such parties make any representation regarding the advisability of investing in such product(s) nor do they have any liability in relation thereto, including for any errors, omissions, or interruptions of any index.

**State Street Global Advisors Funds Distributors LLC, member FINRA, SIPC.**

State Street Global Advisors, One Iron Street, Boston, MA 02210.

Tracking Code: 3236518.9.1.AM.INST

Expiration Date: December 31, 2020